

**INTRUSION DETECTION  
THROUGH VIDEO ANALYSIS**

# FOXVIGI V4



**Outdoor detection  
with «custom-made» video analysis**

---



**VAUBAN**  
BY HIRSCH

## OUTDOOR DETECTION WITH «CUSTOM-MADE» VIDEO ANALYSIS

**The FoxVigi solution is the result of more than 20 years of research and experience in AI on hundreds of secured sites. It offers a high-performance and robust outdoor detection solution with integrated video qualification, allowing intrusion to be effectively and immediately transformed into an alert.**

FoxVigi is a solution integrated into the security video chain through its interfaces with remote monitoring and the leading VMS and PSIMs on the market.

Equipped with advanced features, FoxVigi offers an optimized user experience with simplified and intuitive configuration for easy setup. Requiring low resource consumption, FoxVigi can be deployed on any cyber-secured, redundant, or virtualized server infrastructure, for configurations ranging from a few to several dozens of cameras. FoxVigi is particularly suitable for all sensitive sites requiring advanced or complex functional adaptation.

Optionally, Vauban by Hirsch offers a range of pre-configured and optimized servers.\*

## NEW FEATURES

- ▶ New AI filters
- ▶ New VGA analysis
- ▶ Automatic detection and absorption of NUC for thermal sensors
- ▶ Cyber improvement (SFTP)
- ▶ Milestone integration update and new integration with Network Optix
- ▶ Management of a FTP backup for remote monitoring



## ADVANCED VIDEO ANALYSIS PLATFORM

### Outdoor Detection Algorithms incorporating the latest AI innovations

- **AI filters:** effective reduction of false alarms in complex environments.
- **Fine tuning of analysis sensitivity** (multi-zones, multi-levels...).
- **Long-range detection management**
- **Analysis on native VGA stream:** simplified settings and improved detection.
- **Combination of analysis rules:** simplified settings and improved detection.

### Optimized User Interface, for quick setup and maintenance

- **Intuitive setup toolbox** for easy configuration by integrators or maintainers.
- **«Play & Tune» function:** Immediate simulation of configuration changes on replayed video sequences enabling to best adjust the calibration of the site and facilitate Maintenance in Operational Condition.
- **Self-diagnostic tool:** loss of video stream or low frame rate, masking, sabotage.
- **Integrated solution into the security video chain,** comprehensive embedded documentation, easy keyword search.



FoxServer range up to 100 channels

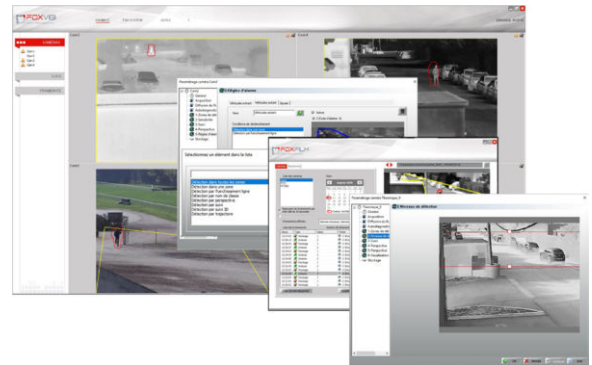
## A SOLUTION INTEGRATED INTO THE SECURITY VIDEO CHAIN

FoxVigi is interfaced with:

- ▶ **The leading VMS and PSIM on the market:** Alcea, Camtrace, Casd, Eboo Solutions, Geutebruck, Genetec, Lenel, Milestone, Network Optix, Prysm, Seek-One.
- ▶ **Remote monitoring softwares:** AzurSoft, Esi, Immix, Megalam, Logetel et T2i Security System, protocole SIA DC-09

### Integrated Event Manager

- **Creation of customized tasks and scenarios** to associate events, (internal or external) with actions (internal or external).
- **Management of analysis activation** (by dry contacts, scheduling, XML protocol, etc.).
- **Setting up alarm notifications and OSD** to third-party software (VMS, PSIM, Alarm & CCTV remote monitoring softwares...).
- **Compatibility with external I/O modules**
- **Coupling of analysis** with external sensors



## TAILORED SUPPORT BY VAUBAN BY HIRSCH

- **Camera Implantation designs (FoxTool) and recommendations,** assistance with deployment and operational commissioning, assistance throughout the life of the installation.
- **FoxVigi certification training:** a skills transfer to enable our partners to have all the necessary autonomy.
- **FoxVigi Software Service and Maintenance Program (SSMP):** recommended to benefit from technical support for installation and application updates, to maintain the solution at peak efficiency over time.